



# EFI Fiery® XF

Large to Superwide Format Inkjet RIP for the Highest Color Quality,  
Greater Productivity and Maximum Performance

EFI Inkjet Printing Applications

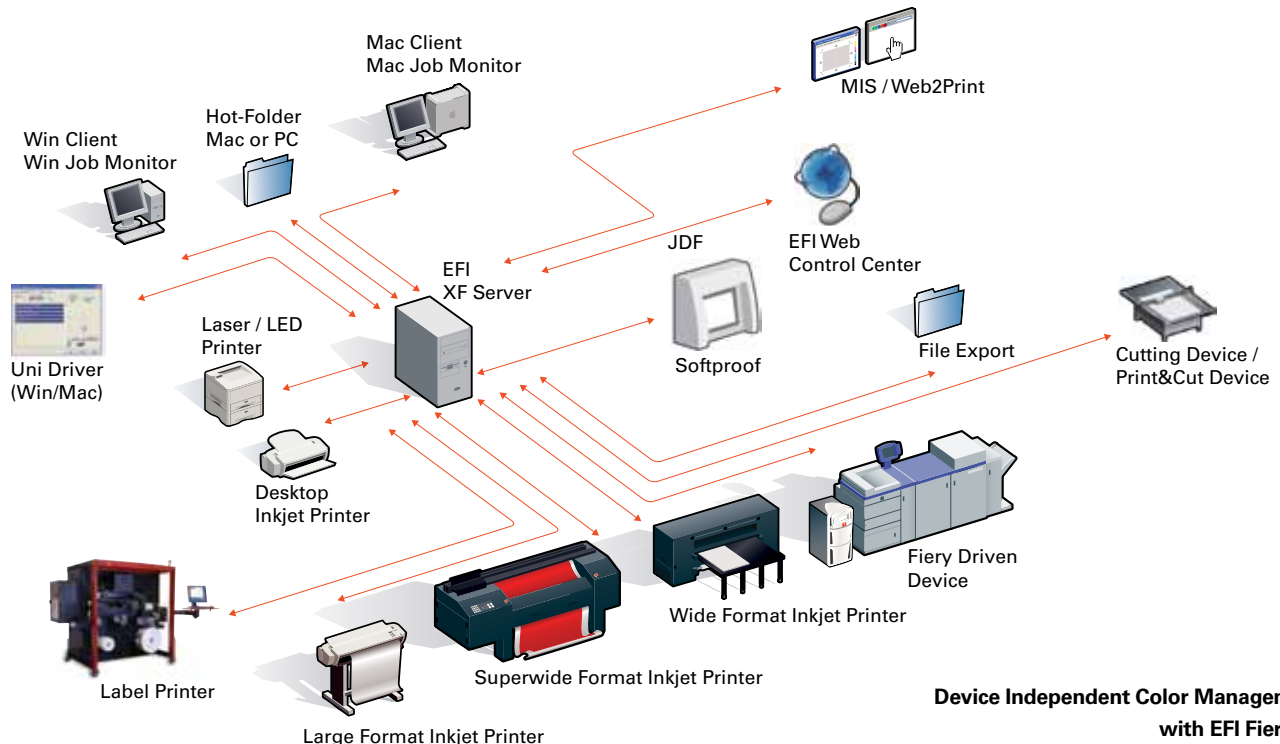


# Maximize your Investment by Making Print Production Faster, Easier and More Efficient

EFI™ Fiery® XF achieves a new level of color quality and productivity for large to superwide format inkjet printing devices on banners, posters, signs and vehicle wraps! Powered by Bestcolor® Technology, Fiery XF maximizes your investment by dramatically reducing production times, unifying the handling of your printing devices, and producing the most accurate and vibrant colors every time. It is available in three configurations to match your personal business needs.

## Makes production easy and fast!

Fiery XF's intuitive, graphical user interface and tutorial wizards shorten your operators' learning curves – regardless of their skill level. In addition, the solution simplifies work routines and job management with several features, such as integrated workflow-based job processing, a full set of fast and powerful production tools, and its preview feature with dedicated layout and editing capabilities, including last minute color adjustments. The solution also allows you to do multiple tasks simultaneously, such as create proofs while printing other jobs. The native support of Windows® 64-Bit operating systems and the new integrated multi-threaded half toning technology ensure highest ripping performance at any time.



**Device Independent Color Management  
with EFI Fiery XF**



### Improve customer satisfaction with highest color quality

EFI Fiery XF provides you with sophisticated ICC-based color management, enabling you to fulfill your customers' demands for accurate and consistent colors every time. The optional Intelligent Clean Color Technology uses the color gamut of your printer to its fullest and offers vivid, saturated color with optimum modulation and a clean appearance for eye-catching print products.

The solution's linearization function also works seamlessly with spectrophotometers, such as Barbieri and X-Rite, to produce consistent, accurate color output every time. In addition, it allows you to optimize ICC profiles or do re-linearizations based on measurements and/or visual evaluations.

Fiery XF's Spot Color Module easily manages, simulates and optimizes spot colors, while international spot color tables are included to ensure correct colors. Unknown spot colors can easily and quickly be defined or simply linked to known spot colors or to specific printer inks (e.g., white, gloss, metallic, etc.).

Multi-channel job processing also becomes simpler because colors and channels are automatically routed to each other as long as the multi-channel reference profile includes the color names that match the channel of the job.

In addition, the flexible solution gives you greater color control. The new patent-pending Dynamic Rendering Intent analyzes your job colors and picks the ideal settings for you, while the solution's powerful RGB workflow for photo and production printing delivers brilliant output quality for even your most demanding customers. The patent-pending Dynamic Wedge™, a revolutionary wedge technology for key colors (in Lab, RGB, CMYK or MultiColor) and for spot colors, verifies and optimizes a job's color accuracy.

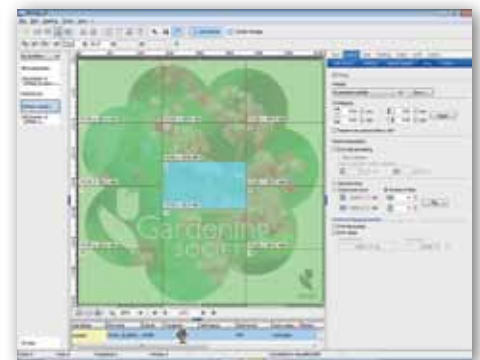
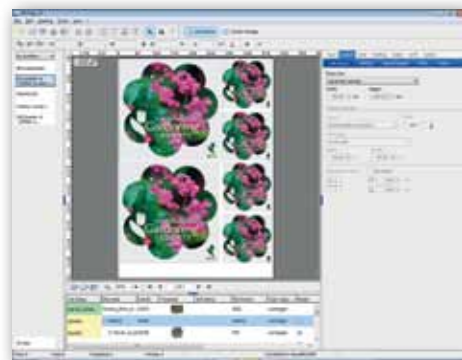
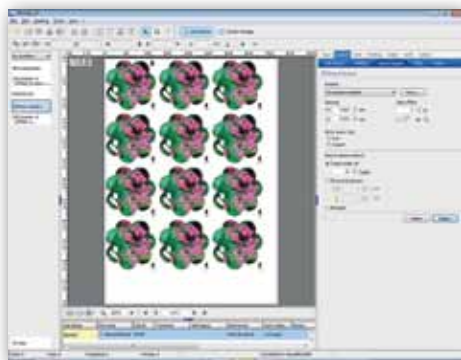
### Adapts to customers' specific needs

With EFI Fiery XF's client-server architecture, you can decentralize operations such as job monitoring and editing to achieve greater flexibility and productivity. The solution's cross platform integration allows you to use your existing Windows® and Macintosh® environments. In addition, Fiery XF's modular structure handles all your current and future printing needs, providing you the highest return on investment. For instance, you can add options, such as the EFI Cut Server Option, for a dedicated cutting solution that operates with more than 1,200 cutters and routing tables. With Fiery XF's JDF connectivity, you also can add our EFI MIS/ERP and Web-to-Print Solutions to streamline your workflow, increase your productivity and save you money by eliminating redundant production steps.

### Get integrated solutions for the Color Supply Chain

Coupled with other EFI solutions, EFI Fiery XF is the answer to your challenges with the Color Supply Chain – the end-to-end process of producing good color from creative design to final print production. The benefits are faster execution, reduced costs and consistent corporate colors.

Combined with EFI Web Control Center, a Web-based application for remote print job control and distribution, you profit from the most efficient remote printing workflow ever.



The cost-effective Fiery XF RIP comes with a full set of production tools, such as Step & Repeat, Nesting, Tiling and many others.

## XF Components

### Fiery XF Basic Configurations

Fiery XF is available in the configurations Fiery XF Essential, Fiery XF Advanced and Fiery XF Premium. These configurations come with the cross-platform XF Server for Mac® and Windows, an unlimited number of clients, the Spot Color Module, and the Production Module with a complete set of production features. Additional product and output options allow you to expand your system to meet your specific needs.

### Product Options

**Color Manager Option:** Provides ICC-based tools for professional creation of ICC and device link profiles.

**Color Verifier Option:** Verifies the quality and reliability of the printouts through measuring and comparing color values against ISO, G7 or own quality standards.

**Cut Server Option:** Offers a comprehensive cutting solution that drives vinyl cutters and routing tables from industry-leading partners.

**Cut Marks Option:** Completes and speeds up the production process by supporting all industry standard cutting and finishing marks and methods

**Dot Creator Option:** Outputs contone data as screened prints or proofs to simulate the AM screening characteristics of the final run.

**OneBit Option:** Allows users to proof the screening of the final run by using the screen data created by the film setter or plate setter RIP.

**Japanese Font Option:** Offers integrated font download and additional Japanese characters.

### Output Options

Printer Options M, XL and XXL: Supports a wide range of inkjet, LED and laser printers of various printer vendors, depending on the size of your printer: Printer Option M for up to 18" or A2. Printer Option XL for 24" printers. Printer Option XXL for printers bigger than 24"

### Dedicated Printer Options:

- Printer Option VUTEK for EFI VUTEK printers
- Printer Option Rastek for EFI Rastek printers
- Printer Option OKI for OKI printers

**Note:** Every configuration includes at least one Printer Option M-XXL. Fiery XF Essential includes one, Advanced includes two and Premium includes four Printer Options M-XXL. Each Printer Option M-XXL drives one printer out of the printer classes M, XL or XXL. A list of supported devices can be obtained from [www.efi.com](http://www.efi.com). Detailed information about Fiery XF's configurations is included in the Fiery XF features chart.

**Print & Cut Option:** Enables one-step Print & Cut on supported print & cut devices (includes a Printer Option XXL).

**Fiery Option:** Produces color managed files on xerographic devices driven by external and embedded Fiery controllers.

**File Export Option:** Exports color managed TIFF and PDF files.

### System Requirements:

[www.efi.com/XF/Hardware-Requirements](http://www.efi.com/XF/Hardware-Requirements)

**Detailed information on the individual options can be found on the relevant data sheets. Find out more at [www.efi.com](http://www.efi.com).**

Beat the competition and profit with EFI's integrated Fiery®, VUTEK®, Jetrion®, Rastek™, Print MIS and Web-to-Print solutions. Visit [www.efi.com](http://www.efi.com) to learn more.